

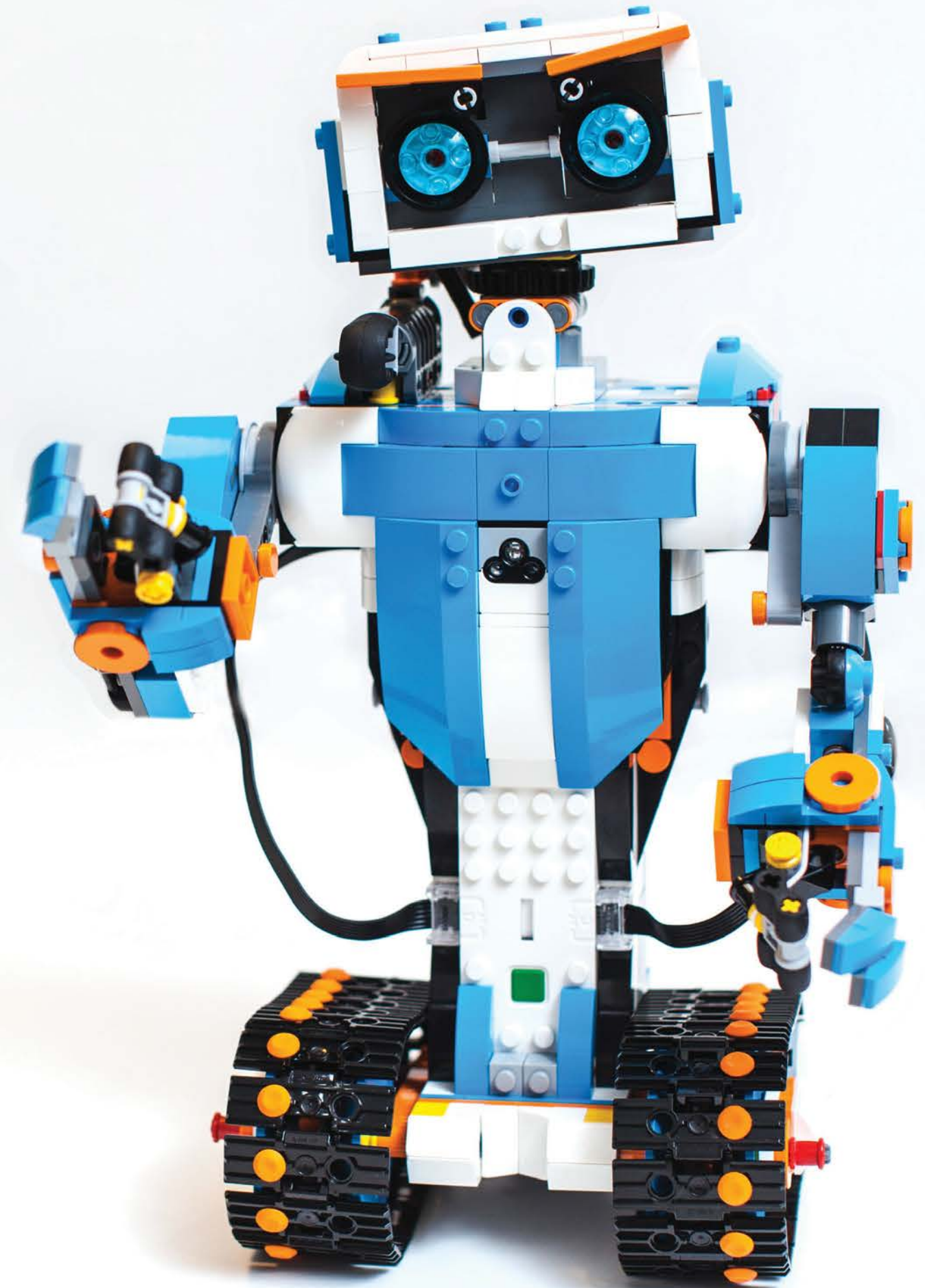


# Intelligent Automation

**With the help from 'digital colleagues,'  
you could free up your employees from  
routine tasks and enhance productivity**

July 2019

[kpmg.co.nz](https://www.kpmg.co.nz)



# Automation technology - Where has it come from



2000

Macro &  
Script

2005

Business Process  
Automation

2012

Robotic Process  
Automation

2016

Machine  
Learning

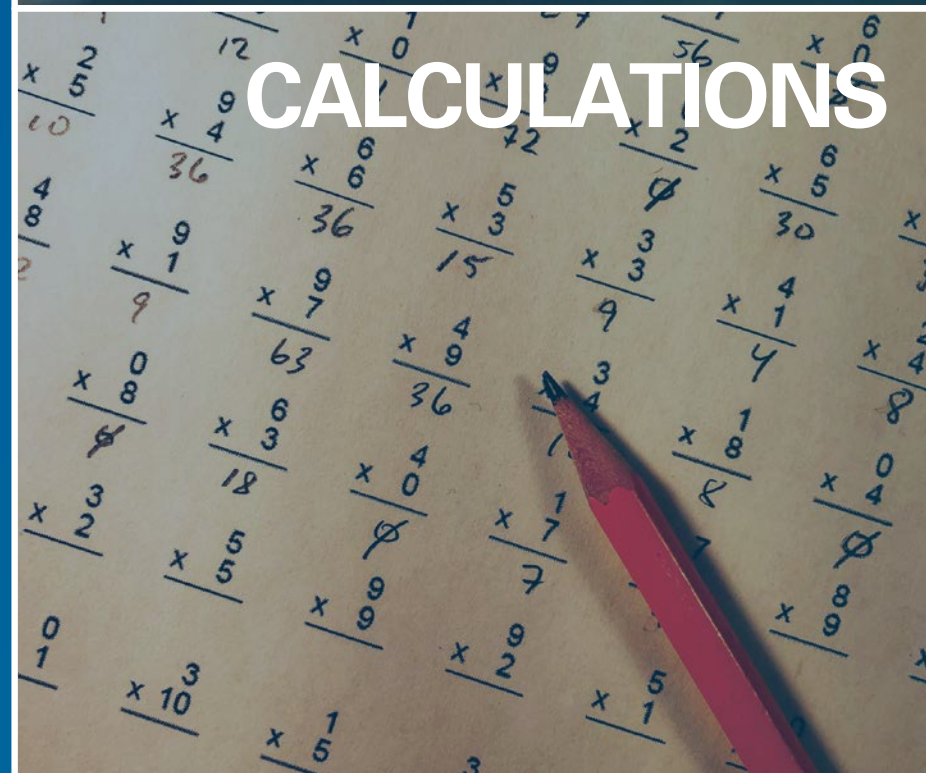
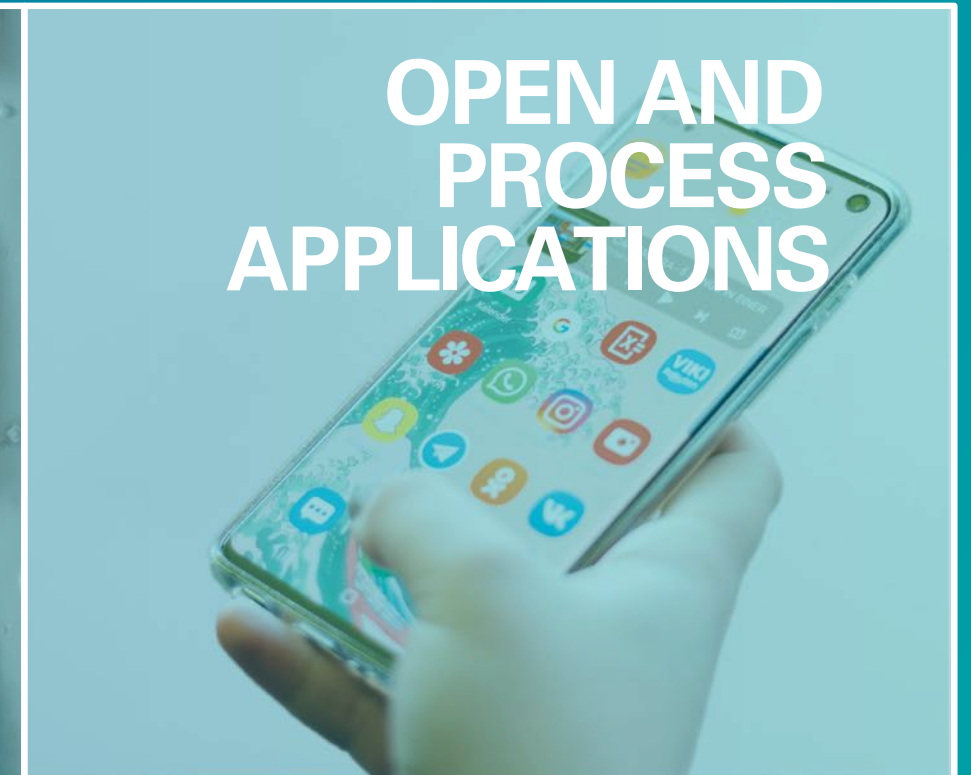
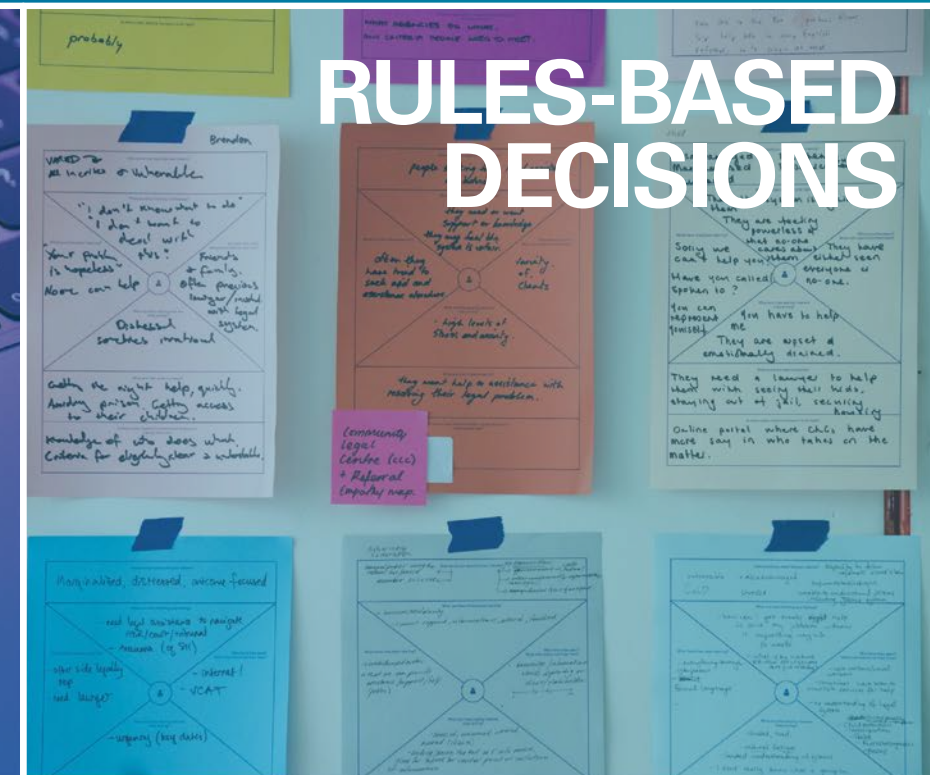
2020

Artificial  
Intelligence





# What can Robotic Process Automation (RPA) do?





# 10 great reasons to use automation technologies

## PEOPLE BENEFITS



TIMESAVING



IMPROVE  
ENGAGEMENT



WORKLOAD  
BALANCE



ENHANCE  
SKILLS

## BUSINESS BENEFITS



FASTER  
TURNAROUND



INTEGRATION  
OPTIONS



REDUCE / CONTAIN  
COSTS



24 HOUR  
PROCESSING



AUDIT &  
COMPLIANCE



REDUCE  
ERRORS

# Automation will invert existing paradigms

Extreme automation will invert the knowledge-work value distribution and challenge existing delivery models.

## Finance capabilities



INSIGHT DELIVERY



COGNITIVE AND ANALYTICS

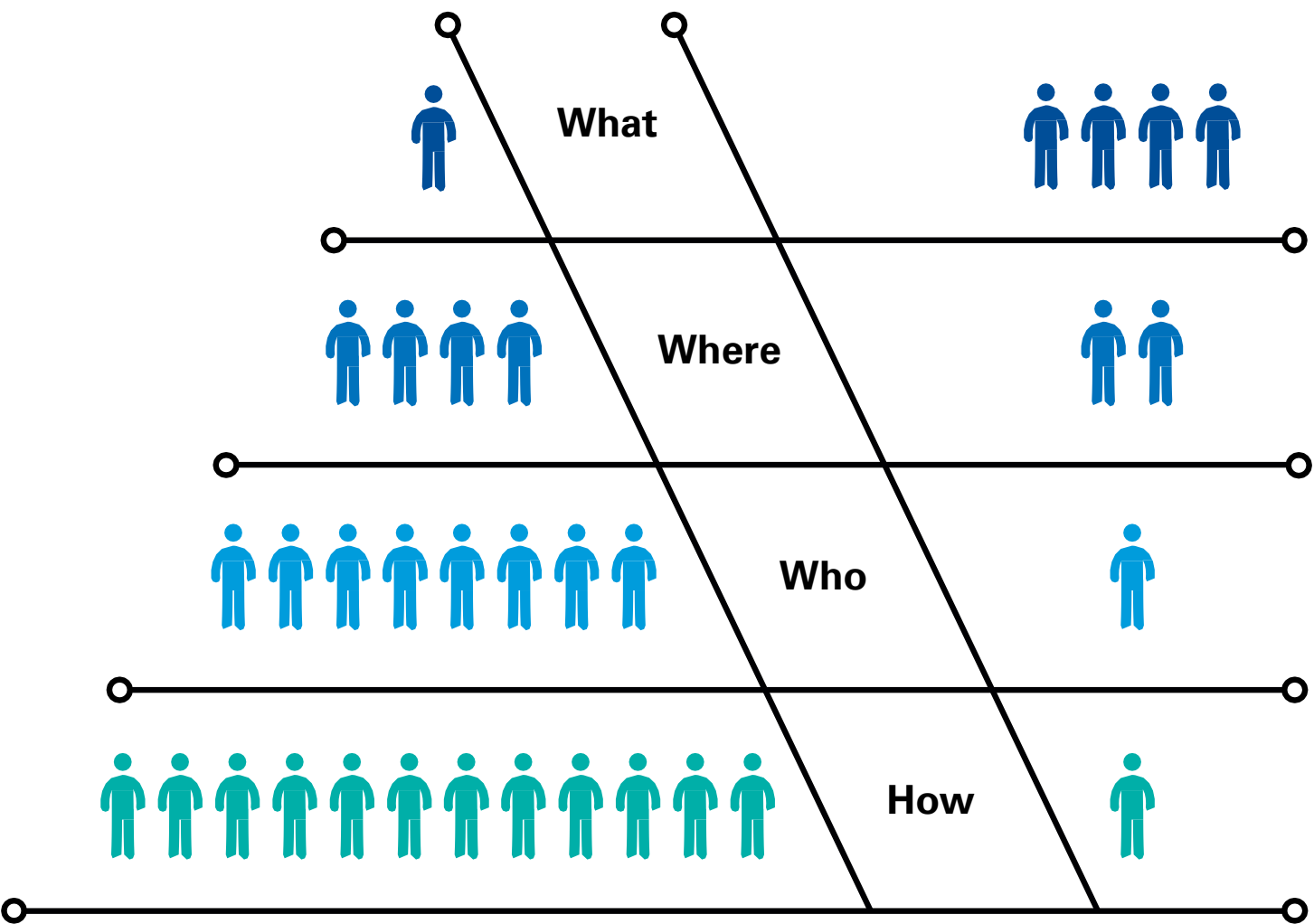


DATA NORMALIZATION  
AND GOVERNANCE



FOUNDATIONAL AND  
TRANSACTIONAL

## Current knowledge-work Value Distribution



## Future knowledge-work value Distribution



Reduction in human  
labour driven by  
e automation.

Automation will  
**empower** the finance  
workforce to add more  
**value** at **rapid** speeds.

Finance must reimagine  
its operating model to  
position itself to meet  
constantly evolving  
requirements.



REDUCED LABOR, MORE INSIGHTS



BETTER USE OF CAPITAL



ACCELERATED GROWTH



RISK REDUCTION



ENHANCED SPEED-TO-VALUE

# See the bigger picture

---

Implementing intelligent automation is more than just technological change.  
It affects components across your operating model.





# Managing change: The human element

---

Integrating your human and automated workforce must be carefully planned and executed throughout your automation journey. This new human-digital ecosystem requires changes in the skills and responsibilities across your business.



# Create a human and machine partnership

---



HUMAN AND  
MACHINE  
PARTNERSHIP

---

INITIATE THE  
**RELATIONSHIP**  
AS SOON AS POSSIBLE



MANAGE THE  
PEOPLE IMPACT

---

INTEGRATE YOUR  
**DIGITAL WORKERS**  
WITH YOUR TEAMS



INSPIRE

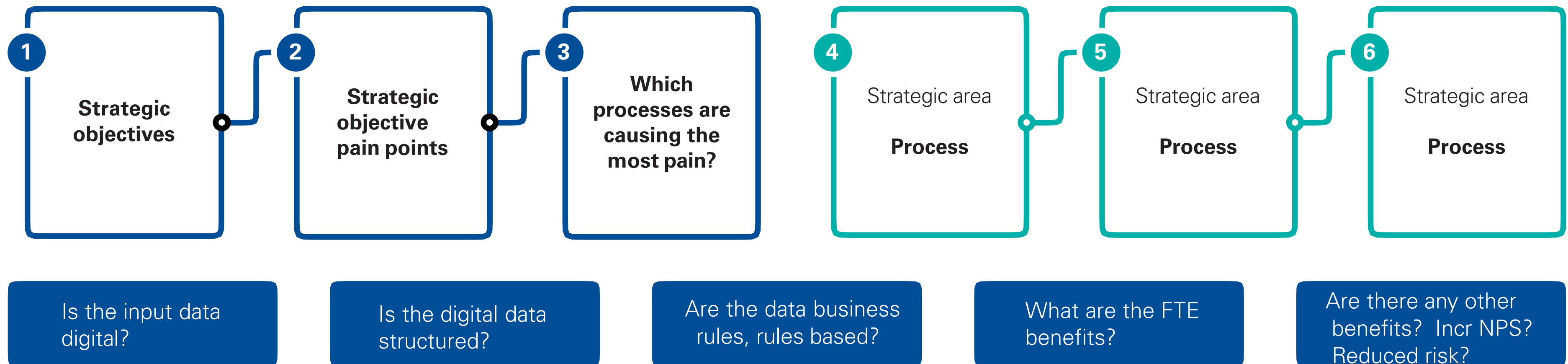
---

RECOGNIZE THE  
**NEED TO CREATE**  
NEW CAREER PATHS



# How to Spot the automation 'bot' opportunity

WHERE CAN INTELLIGENT AUTOMATION ADD VALUE IN YOUR ORGANISATION?

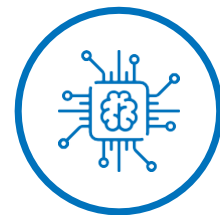


# Key lessons

## - The dirty dozen of automation



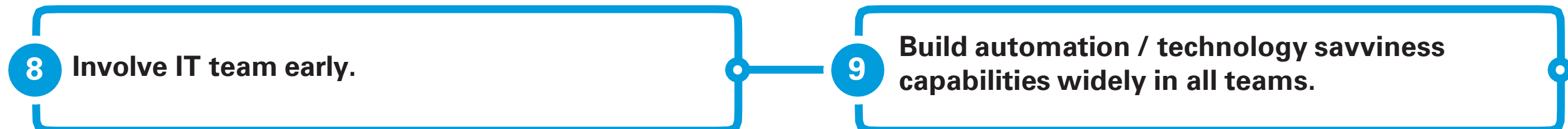
### PEOPLE



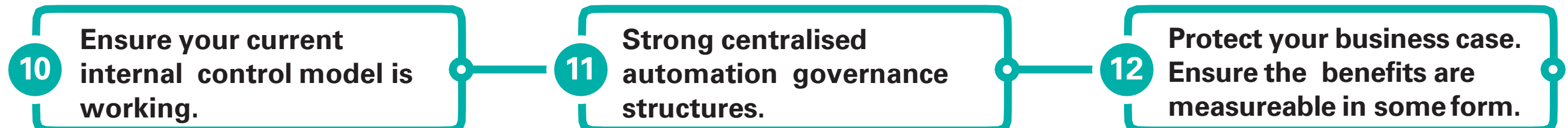
### SPOT THE BOT



### ARCHITECTURE AND DEVELOPMENT



### GOVERNANCE





# Thank you

**Cowan Pettigrew**

KPMG NZ, CIO

The information contained herein is of a general nature and is not intended to address the circumstances of any particular individual or entity. Although we endeavour to provide accurate and timely information, there can be no guarantee that such information is accurate as of the date it is received or that it will continue to be accurate in the future. No one should act on such information without appropriate professional advice after a thorough examination of the particular situation.

© 2019 KPMG, a New Zealand partnership and a member firm of the KPMG network of independent member firms affiliated with KPMG International Cooperative (“KPMG International”), a Swiss entity. All rights reserved. The KPMG name and the KPMG logo are registered trademarks of KPMG International Cooperative (“KPMG International”), a Swiss entity.

[kpmg.com/nz](https://kpmg.com/nz)

